

FIRE SAFETY INSPECTION REPORT

SPECIALISED TEXTILE (CHITTAGONG FASHION GROUP)

**PLOT # 26, ROAD # 4, SECTOR # 1, CEPZ,
CHITTAGONG**

OTHER FACTORIES: NONE



ACCORD
on Fire and Building Safety in Bangladesh

June 23, 2014

SUMMARY

Specialised Textile (Chittagong Fashion Group) was surveyed for fire safety on 6/23/2014 by Hughes Associates, Inc. This summary identifies the major deficiencies that were identified during the inspection.

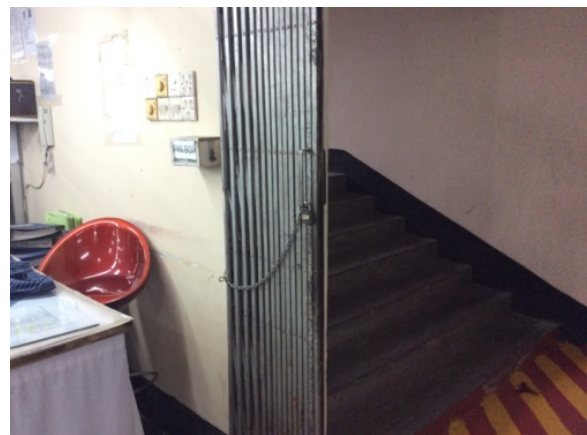
The purpose of this survey was to identify significant fire safety issues and to provide recommendations for remediation based on applicable standards specified by the Accord. The scope of this initial fire safety inspection was limited to the review and identification of major fire safety issues. The inspection did not include identification of minor deficiencies, which will be further addressed as part of follow-up inspections.

Table 1 summarizes the major fire safety issues identified during the inspection. Recommendations have been provided to address each issue.

An implementation schedule shall be developed by the factory to remediate each of the findings. The specific timing of improvements, including any requested extensions due to design / installation constraints, shall be submitted to the Accord for approval.

Table 1. Findings And Recommendations

No.	Category	Finding	Recommendation	Remediation Timeframe
F-1	Fire Rated Construction	The exit stairs are not separated from work areas and other spaces on each floor by fire-rated construction.	<p>Provide minimum 1.5-hr fire rated doors and seal all unprotected openings to separate the exit stairs from work areas and other building spaces on all floor levels. Ensure that the fire doors are self-closing and positive latching and that they are provided with fire exit (panic) hardware where serving production floors.</p> <p>If fire doors are required to be held open for functional reasons, provide automatic-closing devices tied to the fire alarm system.</p>	Within 3 months





F-2	Fire Rated Construction	Unsealed penetrations and openings are located in the fire-rated floor and ceiling assemblies.	Provide a minimum 2-hr fire-rated shaft to separate the utility risers from each floor level.	Within 3 months
-----	-------------------------	--	---	-----------------





F-3	Fire Rated Construction	The boiler, generator, transformer and EMR room is not separated by fire-rated construction due to openings, non-rated doors and penetrations on the ground, fourth, sixth and seventh floor.	Separate the boiler, generator, transformer and EMR room by a minimum 2-hr fire-rated construction. Seal and protect all openings to maintain the required fire separations.	Within 3 months
-----	-------------------------	---	--	-----------------





F-4	Fire Rated Construction	Storerooms used for combustible storages are not separated by fire-rated construction on ground, third, fifth and seventh floor.	Provide dedicated storage rooms separated by minimum 1-hr fire-rated construction.	Within 3 months
-----	-------------------------	--	--	-----------------





F-5	Fire Rated Construction	Areas used for combustible storages are open to factory floors on ground and fourth floor.	Provide defined storage areas and limit the storage arrangement as follows: <ul style="list-style-type: none">- Maximum height of 2.4m and maximum area of 23 m2.- Separate areas of unenclosed combustible storage by a minimum clear distance of 3 m.	Within 3 months
-----	-------------------------	--	--	-----------------





F-6	Egress	Exit capacity (359) is not adequate for the occupant load (370) on the sixth floor.	Reduce occupant load to not more than available exit capacity (359). Provide additional exits in the future to increase occupant load.	Immediate
F-7	Egress	Egress doors and gates with locking features (padlocks) are provided at building exits, exit stairs and along egress routes. All gates and doors were not open and unlocked during the inspection.	<p>Remove locking features from all egress doors and gates.</p> <p>If locks are required for security reasons, utilize special door locking features complying with NFPA 101.</p>	Immediate



F-8	Egress	Storage is located in the egress path on all the floors except sixth and seventh floors.	Keep egress paths and stairs clear of storage.	Immediate
-----	--------	--	--	-----------



F-9	Egress	Storage is located in all the exit stairs on all the floors.	Remove all storage from exit stairs and egress paths.	Immediate
-----	--------	--	---	-----------



F-10	Egress	Collapsible gates and sliding doors are provided at building exits, exit stairs, along egress routes and exit discharge.	Replace all gates and sliding doors along the means of egress with side-hinged, swinging egress doors. If locks are required for security reasons, utilize special door locking features complying with NFPA 101.	Within 1 month
------	--------	--	--	----------------



F-11	Egress	The width of egress aisles is less than 36-in. on all the floors except sixth and seventh floors.	Provide minimum aisle widths of 36-in.	Within 3 months
------	--------	---	--	-----------------



F-12	Egress	The day-care room has a travel distance more than 9 m. on the ground floor.	Relocate day-care room on ground floor with maximum travel distance of 9m (30 ft).	Within 3 months
F-13	Egress	A single means of egress is provided from seventh floor.	Provide additional means of egress.	Within 3 months

F-14	Egress	West exit stairs discharge inside the building on the ground and fourth floors and discharge through Production and Storage areas.	Provide 2-hr fire-rated exit passageway leading directly outside (vestibules to separate any storage areas).	Within 6 months
------	--------	--	--	-----------------



F-15	Fire Protection	The fire alarm system is antiquated, not a listed system, and does not provide alarm and notification features consistent with acceptable standards.	Replace the fire alarm system with a new, listed addressable fire alarm system in accordance with NFPA 72.	Design within 4 months, install within 9 months
------	-----------------	--	--	---

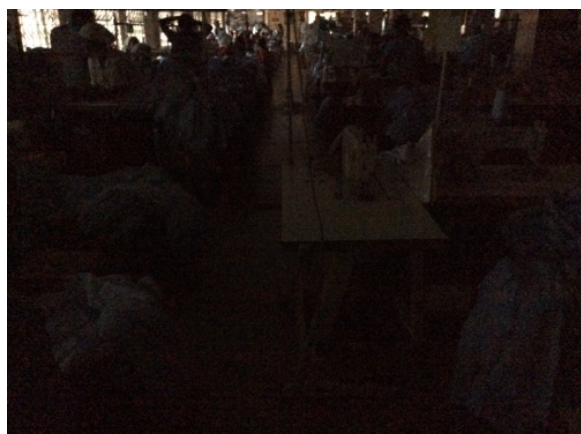


F-16	Fire Protection	Inspection, testing, and maintenance for the fire alarm system are not in accordance with NFPA 72.	Inspect, test and maintain the fire alarm system, and keep written records on-site, in accordance with NFPA 72.	Within 3 months
------	-----------------	--	---	-----------------

F-17	Fire Protection	The building is equipped with single-station smoke alarms. Smoke alarm activation sounds only a local alarm and does not provide automatic fire alarm notification of occupants.	Remove single station smoke alarms. Provide automatic smoke detection throughout the building in accordance with NFPA 72.	Within 6 months
------	-----------------	--	---	-----------------



F-18	Egress Lighting	Emergency lighting did not function in test mode on the second floor.	Regularly test the emergency lighting system on each floor and replace and repair emergency lighting system including the alternative Instant Power Supply as needed.	Within 1 month
------	-----------------	---	---	----------------



F-19	Egress Lighting	Manual on-off switch is provided for emergency lighting and exit signage units in the West exit stair.	Remove manual on/off switches from emergency lighting and exit signage units to prevent them from being switched off.	Within 1 month
------	-----------------	--	---	----------------



F-20	Egress Lighting	Inspection, testing, and maintenance for the emergency lighting system are not in accordance with The ACCORD Standard.	Inspect, test and maintain the emergency lighting system in accordance with The ACCORD standard. Keep written records on-site.	Within 3 months
------	-----------------	--	--	-----------------

F-21	Egress Lighting	Based on the number and location of emergency lights observed, adequate illumination levels are not anticipated along egress routes on the factory floors and exit stairs.	Test the emergency lighting system on each floor and provide additional emergency fixtures to provide adequate illumination along the means of egress. Provide a minimum illumination of 10 lux at the floor level within exit stairs and exit discharge paths and minimum 2.5 lux along exit access aisles.	Within 3 months
------	-----------------	--	--	-----------------

